

# VALOISTE-HAMINA LED



230V/50Hz

## 1. Dimensions:

Type	600x600 / GK	NT
Power [W]	44	44
A x B [mm x mm]	-	320 x 320
C x D [mm x mm]	585 x 585	-
H [mm]	72	75
L x W [mm]	595 x 595	595 x 595
Weight [kg]	5,5	6,9

## 2. Installation:

- Turn off the power of the circuit to which it will be connected luminaire.
- Carefully remove the luminaire from the package.
- Remove the frame plate - NOTE! Frame is mounted by magnets, in order to jerk tight frame and remove the protective springs as in Fig.1.
- Surface mounting:
  - \*Run the wire through the hole in the base as in Fig.2. and tighten Luminaire to the ceiling.
  - \*Plug power cables according to the markings on the connector as in Fig.3
  - \*Insert the ceiling plate in frame size 341x341mm.
  - \*Attach the frame to luminaire.
- Installation of plaster cardboard ceiling:
  - \*Insert the spring into oblong holes as in Fig.4. Then block T-shapes metal elements inside luminaire as in Fig.5.
  - \*Run the wire through the hole in the base as in Fig.2.
  - \*Fold the mounting springs up and insert luminaire into the cut in the ceiling as in Fig.6.
  - \*Plug power, insert the ceiling plate in frame and attach the frame to luminaire.
- Installation in modular ceiling:
  - \*Run the wire through the hole in the base as in Fig.2.
  - \*Plug power cables according to the markings on the connector as in Fig.3
  - \*Insert the ceiling plate in frame size 341x341mm.
  - \*Attach the frame to luminaire.
  - \*Insert luminaire in modular ceiling.

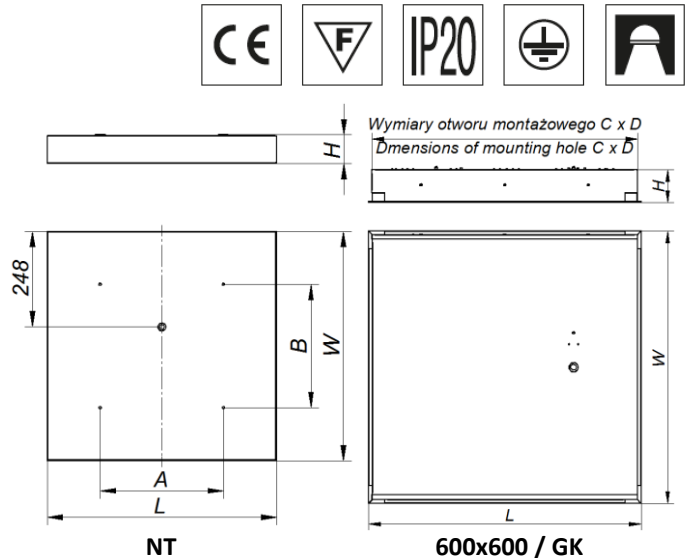


Fig.1.

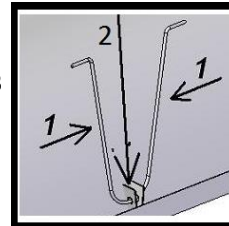


Fig.2.

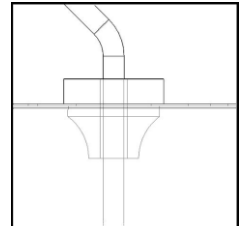


Fig.3.

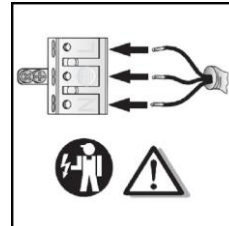


Fig.4.

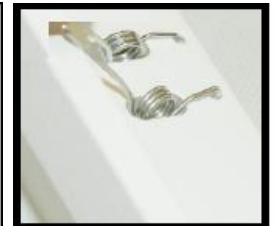
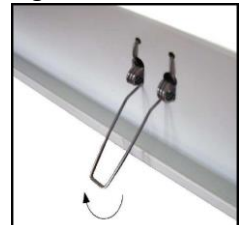


Fig.5.



Fig.6.



## 3. Important warnings:

The manufacturer cannot be considered liable for any damages deriving from improper, wrong and unreasonable use of the fitting.

Luminaires may be installed by qualified personnel only.

Any manipulation inside the luminaire when power supply is on causes the risk of electric shock.

Manufacturer is not responsible for any flaws caused by avoid using this manual.

Manufacturer reserves a right to change the construction of the product.

Do not assembly in places without air circulation.

To guarantee safety of luminaire functions, please assembly according to instruction.



The European Directive 2002/96/EC on waste electrical and electronic equipment, requires that electric and electronic devices must be disposed of in the normal household waste. The crossed out wheeled bin is reproduced in order to remember obligations towards separately collection. For correct disposal, please use authorized waste disposal facilities or returned to the distributor at the date a new lighting fitting is purchased. Lamps, if disposed together with the lighting fitting, shall not be broken up since they contain substances which are highly polluting for the environment. Unauthorized disposal of the foregoing waste material is punishable by law. More details of directive available at: <http://www.gios.gov.pl>

