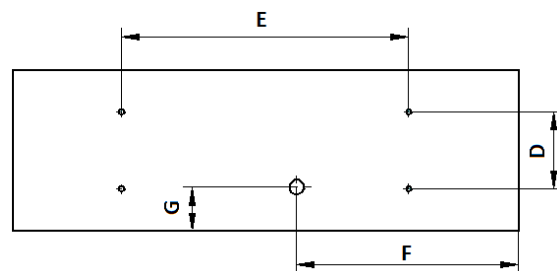
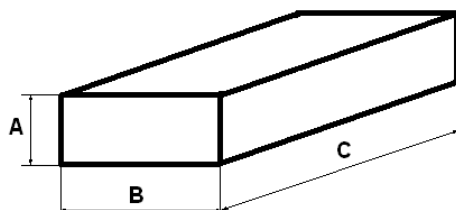


Asennusohjeet Taulu LED



220-240V/50-60Hz LED

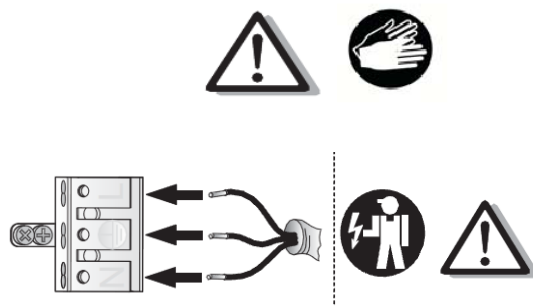
1. Dimensions and weight

Power[W]	A	B	C	Weight (kg)
LED 17	80	172	610	1,8
LED 32	80	172	1170	3,4

Power[W]	D	E	F	G
LED 17	79	480	477	33
LED 32	79	950	732	33

2. Assembly

- remove carefully fixture from packaging and put on safety place (table or floor)
- pull out the louver
- power connection
 - take power wire through dedicated hole in fixture's base
 - connect cables according to signs at power cube
- ceiling mounting:
 - fixture is to be mounted on ceiling with four holes of 7mm diameter
- place the louver back



3. Important warnings:

- the manufacturer cannot be considered liable for any damages deriving from improper, wrong and unreasonable use of the fitting.
- luminaries may be installed by qualified personnel only.
- any manipulation inside the luminaire when power supply is on causes the risk of electric shock.
- manufacturer is not responsible for any flaws caused by avoid using this manual.
- manufacturer reserves a right to change the construction of the product.
- do not install fixture in the area without air circulation.
- in order to keep safe and proper operating of the fixture, it is obliged to follow this instruction.

